



PHILIPPINE ECONOMIC SOCIETY

ANNUAL MEETING AND CONFERENCE

THEME

FROM BOUNCING BACK TO LEAPING FORWARD TOWARDS A FUTURE READY PHILIPPINES

9 NOVEMBER 2022 Novotel Manila Araneta City

10-11 NOVEMBER 2022 Virtual



President's Message

We found the world emerging from the COVID-19 pandemic, with economies showing hopeful signs of recovery in 2021 and the earlier part of 2022. For the Philippines, we bounced back from an economic contraction of 9.5% in 2020 to 5.6% economic growth in 2021. In managing the pandemic, all sectors of society were forced to think outside the box in the conduct of business and transactions, people in living their lives. Policymakers rethought the usual tools and levers and ways to recover. The need for interconnectivity and real-time interoperable data and information systems became evident in the early pandemic health and social protection responses. All of these adaptive responses entailed harnessing digitalization to be future-ready.

Despite the rebound, issues of economic scarring (of people, businesses, governments, and all sectors of society) and ensuring sustainable and inclusive growth are still the priority of policymakers. The solutions require improving and, at times, reinventing the manner of producing and delivering goods and services through enhanced institutions and investments in digitalization and information systems to allow agility in the post-COVID-19 world. Furthermore, in February 2022, geopolitical tensions in Europe shook the world, threatening the fragile growth economies were experiencing, with disruptions in global value chains triggering increased oil and food prices. This has been compounded with inflation due partly to global COVID-19 fiscal stimulus packages, resulting in higher debt for economies.



Now, as with all other major global crises, is a call to arms for economists, individually and collectively. This is the major objective of this conference – to offer solutions, recommendations, and ways to leap forward. We have seen how global negative externalities (COVID-19 pandemic) and disruptions in global value chains impact economies similarly but also differently, and we are lucky to have international participants and speakers at this conference to learn from and with.

This year, the Philippine Economic Society celebrates its diamond anniversary at 60 years. On behalf of the PES Officers and Board of Trustees, let me express our sincerest gratitude to our distinguished keynote speaker, panelists, moderators, session organizers, and paper presenters for sharing their expertise and valuable time. We also would like to thank our conference partners who generously provided financial support for this conference. To our dear PES members and participants, thank you for being part of the 60th PES Annual Meeting and Conference.

Mabuhay ang PES! Mabuhay ang Pilipinas!

Charlotte Justine Diokno-Sicat, Ph.D.
President
Philippine Economic Society

60th PES Annual Meeting and Conference

THEME

FROM BOUNCING BACK TO LEAPING FORWARD TOWARDS A FUTURE READY PHILIPPINES

With countries around the world emerging from the COVID-19 pandemic, many lessons have been learned in efficiently and effectively organizing work environments and the labor market, providing for basic needs of households, and strengthening public institutions, all with profound effects on the delivery of health, education, transportation, housing, energy and power, travel and the design of built environments, as well as the structuring of supply chains and the organization of financial organizations. At the same time, many challenges have emerged following the relatively long period of economic inactivity and the rise of geopolitical threats in Europe. Asia and elsewhere—the rise of oil prices and subsequent inflation, disruptions in international trade, and continued menace of autocracy. Even with the threat of the pandemic receding, issues related to the political, economic, cultural and digital divide, climate change, and autocracy continue to plague the world; these developments have especially affected developing countries, such as the Philippines.

Therefore, the main challenge for the Philippines is how to develop a long-term development strategy that is sustainable, equitable, and less vulnerable to natural and social disruptions. These entail the development of policies and programs that will allow the country to be ready to meet the challenges in the coming decade and beyond.

This year's PES Conference, which also celebrates the sixtieth year of the founding of the organization, showcases policy and programmatic solutions to long-running development issues and aims to push forward fresh ideas to radically move forward in the post-pandemic world. Key speakers will highlight the importance of comprehensive responses for a dynamic and inclusive society as the country continues to move into the 21st century.



Find the SCHEDULE here...

DAY 1, November 9 (Wednesday)

OPENING PLENARY SESSION. From Bouncing Back to Leaping Forward Towards a Future Ready Philippines	11
PLENARY SESSION I. ISAPLANO: Bagong Philippine Development Plan para sa Patuloy na Pagsulong	11
PLENARY SESSION II. 'Green' Competition Policy: Benefits and Challenges	12
PLENARY SESSION III. Pro-poor Development Policies: Lessons from the Philippines and East Asia	12
PLENARY SESSION IV. Philippine Reintegration Efforts for Overseas Workers: Prospects After the Pandemic?	13
PLENARY SESSION V. Human Capital and the Future of Skills in a Post-Pandemic Economy	13
Celebration of PES' 60th Anniversary	

DAY 2, November 10 (Thursday)

SIMULTANEOUS SESSIONS A	
SESSION A1. Building a Resilient Future in Agriculture	14
SESSION A2. Pro-Poor Development Policies: Trade, Poverty, and Social Differentiation	14
SESSION A3. Preparing the Philippine Labor Force to Manage International Migration and Automation	15
SESSION A4. Economic Growth	15
SIMULTANEOUS SESSIONS B	
SESSION B1. Economists in Government: A Conversation	16
SESSION B2. Greening of Philippines' Recovery and Resilience Strategies	16
SESSION B3. Interrogating Informality: A Multidisciplinary Approach in Studying and Understanding the Informal Economy - Part I	17
SESSION B4. Digital Economies and Competition and Innovation Frameworks	17
SIMULTANEOUS SESSIONS C	
SESSION C1. Issues in Macroeconomic Modeling and Policy	18
SESSION C2. Pro-Poor Development Policies: ATM Pawning, Inequality, Redistribution	18
SESSION C3. Prioritizing Sustainable Transport Helps Manage Inflation and Promotes Equitable Economic Recovery	19
SESSION C4. Economics of Energy, Economics of Disaster	19
SESSION C5. Public Policy and Public Health Crisis	20



SIMULTANEOUS SESSIONS D

SESSION D1. Textbook Launch: Macroeconomics for Emerging East Asia	21
SESSION D2. Pro-Poor Development Policies: Competition Law and Policy	21
SESSION D3. Interrogating Informality: A Multidisciplinary Approach in Studying and Understanding the Informal Economy – Part II	22
SESSION D4. Econometric Models and Applications	22
SESSION D5. Education, Health, and Human Capital Formation	23

DAY 3, November 11 (Friday)

SIMULTANEOUS SESSIONS E

SESSION E1. Missed Opportunities and Unmet Needs for Financial Coverage and Care Among Elderly Filipinos	24
SESSION E2. Pro-Poor Development Policies: Demographic Dividend, Agricultural Competition, Political Economy	24
SESSION E3. Poverty Alleviation and Labor Economics	25
SESSION E4. Financial Economics and Trade	25

SIMULTANEOUS SESSIONS F

SESSION F1. Credit Allocation, Financial Literacy, and Market Outlook	26
SESSION F2. Economic and Political Governance Beyond the Crisis	26
SESSION F3. What Will Make Us Leap Forward?: The BSP Narrative	27
SESSION F4. Agriculture, Natural Resource and Environmental Management	27

GENERAL MEMBERSHIP ASSEMBLY	28
-----------------------------	----

PLENARY SESSION VI. Addressing the Social Insurance Needs of the Population	28
---	----

CLOSING PLENARY SESSION. Forecasting the Philippine Economy: Challenges and Opportunities	28
---	----



The Conference Program AT A GLANCE

DAY 1, November 9 (Wednesday)

7:30–8:30	Registration
8:30–10:30	OPENING PLENARY SESSION AND KEYNOTE ADDRESS From Bouncing Back to Leaping Forward Towards a Future Ready Philippines
10:30–10:45	Morning Break
10:45–11:45	PLENARY SESSION I ISAPLANO: Bagong Philippine Development Plan para sa Patuloy na Pagsulong (sponsored by: National Economic and Development Authority)
11:45–12:45	Lunch
12:45–1:45	PLENARY SESSION II 'Green' Competition Policy: Benefits and Challenges (sponsored by: Philippine Competition Commission)
1:50–2:50	PLENARY SESSION III Pro-poor Development Policies: Lessons from the Philippines and East Asia (sponsored by: Southeast Asian Regional Center for Graduate Study and Research in Agriculture)
2:50–3:05	Afternoon Break
3:05–4:05	PLENARY SESSION IV Philippine Reintegration Efforts for Overseas Workers: Prospects After the Pandemic? (sponsored by: Friedrich Naumann Foundation)
4:10–5:10	PLENARY SESSION V Human Capital and the Future of Skills in a Post-Pandemic Economy (sponsored by: De La Salle University)
5:15–5:30	Celebration of PES' 60th Anniversary
	COCKTAILS



The Conference Program AT A GLANCE

DAY 2, November 10 (Thursday)

SIMULTANEOUS SESSIONS A (9:00 am – 10:30 am)

SESSION A1	Building a Resilient Future in Agriculture <i>(sponsored by: DOST-PCAARRD)</i>
SESSION A2	Pro-Poor Development Policies: Trade, Poverty, and Social Differentiation <i>(sponsored by: Ateneo Center for Economic Research and Development & Ateneo de Manila University Department of Economics)</i>
SESSION A3	Preparing the Philippine Labor Force to Manage International Migration and Automation
SESSION A4	Economic Growth

SIMULTANEOUS SESSIONS B (10:30 am – 12:00 noon)

SESSION B1	Economists in Government: A Conversation <i>(sponsored by: National Economic Development Authority)</i>
SESSION B2	Greening of the Philippines' Recovery and Resilience Strategies <i>(sponsored by: United Nation Development Programme)</i>
SESSION B3	Interrogating Informality: A Multidisciplinary Approach in Studying and Understanding the Informal Economy – Part I
SESSION B4	Digital Economies and Competition and Innovation Frameworks

SIMULTANEOUS SESSIONS C (1:00 pm – 2:30 pm)

SESSION C1	Issues in Macroeconomic Modeling & Policy
SESSION C2	Pro-Poor Development Policies: ATM Pawning, Inequality, Redistribution
SESSION C3	Prioritizing Sustainable Transport Helps Manage Inflation and Promotes Equitable Economic Recovery
SESSION C4	Economics of Energy, Economics of Disaster
SESSION C5	Public Policy and Public Health Crisis

SIMULTANEOUS SESSIONS D (2:30 pm – 4:00 pm)

SESSION D1	Textbook Launch: Macroeconomics for Emerging East Asia
SESSION D2	Pro-Poor Development Policies: Competition Law and Policy
SESSION D3	Interrogating Informality: A Multidisciplinary Approach in Studying and Understanding the Informal Economy – Part II
SESSION D4	Econometric Models
SESSION D5	Education, Health, and Human Capital Formation



The Conference Program AT A GLANCE

DAY 3, November 11 (Friday)

SIMULTANEOUS SESSIONS E (8:30 am – 10:00 am)

SESSION E1	Missed Opportunities and Unmet Needs for Financial Coverage and Care Among Elderly Filipinos
SESSION E2	Pro-Poor Development Policies: Demographic Dividend, Agricultural Competition, Political Economy
SESSION E3	Poverty Alleviation and Labor Economics
SESSION E4	Financial Economics and Trade

SIMULTANEOUS SESSIONS F (10:00 am – 11:30 am)

SESSION F1	Credit Allocation, Financial Literacy, and Market Outlook (Sponsored by: First Metro Securities and Ateneo Center for Economic Research and Development)
SESSION F2	Economic and Political Governance Beyond the Crisis (Sponsored by: Stratbase ADRI Institute)
SESSION F3	What Will Make Us Leap Forward? – the BSP Narrative (Sponsored by: Bangko Sentral ng Pilipinas)
SESSION F4	Agriculture, Natural Resource and Environmental Management

1:00–1:30 GENERAL MEMBERSHIP ASSEMBLY

1:30–2:45 PLENARY SESSION VI (EFL Session) Addressing the Social Insurance Needs of the Population

3:00–4:30 CLOSING PLENARY SESSION Forecasting the Philippine Economy: Challenges and Opportunities



The Conference Program IN DETAIL

DAY 1, November 9 (Wednesday)

OPENING PLENARY SESSION

8:30 – 10:30 am

OPENING REMARKS AND INTRODUCTION OF THE KEYNOTE SPEAKER

Dr. Charlotte Justine Diokno-Sicat
President, Philippine Economic Society

KEYNOTE ADDRESS

What Next After Hyper-globalization and Export-oriented Industrialization?

Dr. Dani Rodrik
*President, International Economic Association
Ford Foundation Professor of International Political Economy, Harvard Kennedy School*

PANEL DISCUSSION

From Bouncing Back to Leaping Forward Towards a Future Ready Philippines

Panelists	<p>Sec. Arsenio M. Balisacan <i>National Economic and Development Authority (Former PES President)</i></p> <p>Dr. Raul V. Fabella <i>National Academy of Science and Technology/ School of Economics, University of the Philippines (Member, PES Council of Advisers)</i></p> <p>Dr. Selva Ramachandran <i>United Nations Development Programme Philippines</i></p>
Session Moderator	<p>Mr. Coco Alcuaz <i>Makati Business Club</i></p>

PLENARY SESSION I

ISAPLANO: Bagong Philippine Development Plan para sa Patuloy na Pagsulong

(sponsored by: National Economic and Development Authority)

10:45 – 11:45 am

Panelists	<p>Sec. Arsenio M. Balisacan <i>National Economic and Development Authority</i></p> <p>Dr. Jefferson A. Arapoc <i>University of the Philippines Los Baños</i></p> <p>Mr. Rogelio L. Singson <i>Management Association of the Philippines</i></p>
Session Moderator	<p>Dr. Karl Robert L. Jandoc <i>School of Economics, University of the Philippines</i></p>



The Conference Program IN DETAIL

PLENARY SESSION II 'Green' Competition Policy: Benefits and Challenges (sponsored by: Philippine Competition Commission)

12:45–1:45 pm

Main Presentation	Dr. James Roumasset <i>University of Hawai'i</i>
Panelists	Atty. Marc Waha <i>Norton Rose Fulbright Hong Kong</i> Atty. Johannes Benjamin R. Bernabe <i>Philippine Competition Commission</i>
Session Moderator	Dr. Majah-Leah V. Ravago <i>Department of Economics, Ateneo de Manila University</i> (Former PES President)

PLENARY SESSION III Pro-poor Development Policies: Lessons from the Philippines and East Asia (sponsored by: Southeast Asian Regional Center for Graduate Study and Research in Agriculture)

1:50 – 2:50 pm

Opening Remarks	Dr. Glenn Gregorio <i>Southeast Asian Regional Center for Graduate Study and Research in Agriculture</i>
Panelists	Dr. Hal Hill <i>Australian National University</i> Dr. Keijiro Otsuka <i>Kobe University</i> Dr. Mark Rosegrant <i>International Food Policy Rice Institute</i> Dr. Suthad Setboonsarng <i>International Rice Research Institute</i> Dr. Peter Warr <i>Australian National University</i>
Session Moderator	Mr. Benedict A. Juliano <i>Southeast Asian Regional Center for Graduate Study and Research in Agriculture</i>



The Conference Program IN DETAIL

PLENARY SESSION IV

Philippine Reintegration Efforts for Overseas Workers: Prospects After the Pandemic?

(sponsored by: Friedrich Naumann Foundation)

3:05–4:05 pm

Main Presentation Philippine Reintegration Efforts for Overseas Workers:
During a Pandemic and Under a New Government,
What Prospects Abound?
Dr. Alvin P. Ang, Dr. Maire Carroline T. Magante,
Ms. Isabella Militante and Dr. Jeremaiah M. Opiniano
Ateneo Center for Economic Research and Development

Session Moderator Dr. Alvin P. Ang
Department of Economics, Ateneo de Manila University
(Former PES President)

PLENARY SESSION V

Human Capital and the Future of Skills in a Post-Pandemic Economy

(sponsored by: De La Salle University)

4:10 – 5:10 pm

Main Presentation Dr. James J. Heckman
University of Chicago

Session Moderator Dr. Jesus Felipe
School of Economics, De La Salle University

Celebration of PES' 60th Anniversary

5:15 – 5:30 pm



The Conference Program IN DETAIL

DAY 2, November 10 (Thursday)

SIMULTANEOUS SESSIONS A

9:00 am – 10:30 am

SESSION A1

Building a Resilient Future in Agriculture

(sponsored by: DOST-PCAARRD)

Development of Smart Food Value Chain Models for Selected Agricultural Products – Strawberry

Mar B. Cruz* & Clarizel Joy Jamille R. Gomez
University of the Philippines Los Baños

Development of Smart Food Value Chain Models for Selected Agricultural Products – Coffee

Hanna D. Miranda-Quibot* & Alyssah R. Acebedo
University of the Philippines Los Baños

Development of Smart Food Value Chain Models for Selected Agricultural Products – Milkfish

Normito R. Zapata, Jr.,*
Janelle Ayne C. Sarmiento, & Mar B. Cruz
University of the Philippines Los Baños

Development of an S&T based Gender-responsive and Crisis-resilient Root and Tuber Crops Value Chain through a Participatory Market Chain Approach

Lorna E. Sister,* Dennis Marvin O. Santiago,
Michael Angelo S. Esteban, Michael Cedric B. Bartolome, Elaine Marie Y. Reboton, Bjorn Q. Manuel,
Jonnalyn M. De Mesa, & Marlon T. Borja
University of the Philippines Los Baños

Impact Assessment of Floods and Droughts in Selected Agricultural Municipalities in Laguna

Maria Angeles O. Catelo,* Myra E. David,
Patricia J. Sanchez, Mona Liza F. Delos Reyes,
Agnes C. Rola, Jaimie Kim B. Arias, Maria Cristina A. Alvarez, Jessa O. Aquino, Catherine B. Gigantone,
Therese R. Olviga, Aaron T. Castillo, Deborah B. Gay,
Ma. Helen F. Dayo, Christine Jane E. Ramacula,
& Paul Edrine C. Mapoy
University of the Philippines Los Baños

Moderator

Princess Alma B. Ani
DOST-PCAARRD

SESSION A2

Pro-Poor Development Policies: Trade, Poverty, and Social Differentiation

(sponsored by: ACERD & ADMU Dept. of Economics)

The Limits of Trade Policy Liberalization in the Philippines

Fernando T. Aldaba, Alvin P. Ang,*
& Cielito F. Habito
*Department of Economics,
Ateneo de Manila University
(Former PES Presidents)*

Low Income Traps and Philippine Poverty Incidence

Raul V. Fabella*
NAST and UP School of Economics
Geoffrey M. Ducanes
*Department of Economics,
Ateneo de Manila University*

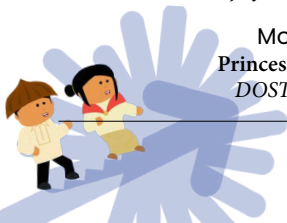
Social Differentiation: The Middle Class and its Discontents

Emmanuel S. de Dios
*School of Economics,
University of the Philippines
(Former PES Trustee)*

Philip Arnold P. Tuaño*
*Department of Economics,
Ateneo de Manila University
(PES Vice President)*

Moderator

Alvin P. Ang
*Department of Economics
Ateneo de Manila University*



The Conference Program IN DETAIL

DAY 2, November 10 (Thursday)

SIMULTANEOUS SESSIONS A

9:00 am – 10:30 am

SESSION A3

Preparing the Philippine Labor Force to Manage International Migration and Automation

Pliant Like the Bamboo: Institutional Heterogeneities of Host Countries and the Labor Market Assimilation of Filipinos Around the World

Christopher James R. Cabuay*
School of Economics, De La Salle University
Budy P. Resosudarmo
Crawford School of Public Policy, Australian National University

Impact of International Labor Migration on Education of Children Left Behind: Evidence from the Community-Based Monitoring System (CBMS) Data in the Philippines

Alellie B. Sobreviñas*
Janne Bemmelmans, & Novee Lor Leyso
School of Economics, De La Salle University

Is Automation Pro-poor?: Evidence from the Philippines
Jason Alinsunurin*, Mariel Monica Sauler*, Dickson Lim, Jason Catacutan, Rene Mendoza, Joy Ranola, & Fe Yee
School of Economics, De La Salle University

Moderator

Christopher James R. Cabuay
De La Salle University

SESSION A4

Economic Growth

Evolution of the Philippine Economic Landscape: 2000-2018

Rolly Czar Joseph T. Castillo*
Labor Education and Research Network
James Matthew B. Miraflor
Department of Computer Science, University of the Philippines Diliman

Macroeconomic Determinants Affecting Happiness: A Panel Data Analysis in the South and Southeast Asia Region

Kezia Joy Q. Cayunda, Hyciel C. Gapor, Trishia Nicole V. Lusing, & Renzo L. Sumagang
Mindanao State University-Iligan Institute of Technology

Learning Probabilistic Networks of Economic Activities from Colocation

James Matthew B. Miraflor
Department of Computer Science, University of the Philippines Diliman

Moderator

Adoracion M. Navarro
Philippine Institute for Development Studies



The Conference Program IN DETAIL

DAY 2, November 10 (Thursday)

SIMULTANEOUS SESSIONS B

10:30 am – 12:00 noon

SESSION B1 Economists in Government: A Conversation

*(Sponsored by: National Economic
Development Authority)*

Interlocutors

Jonathan L. Uy
National Economic and Development Authority

Leonel Cray P. De Velez
Department of Transportation

Juvy C. Danofrata
Department of Finance

Merwin H. Salazar
*Senate Economic Planning Office
Senate of the Philippines*

Moderator
Agustin L. Arcenas
University of the Philippines Los Baños

SESSION B2 Greening of the Philippines' Recovery and Resilience Strategies

(Sponsor: United Nation Development Program)

Opening Remarks

**Evidence-based Benefits of Green
Recovery Presentation**

Iker Larrea
Global Factor

**Sector-specific Policies, Entry Points, and
Recommendations to Advance Green
Recovery in the Country**

**Alfredo Barnarte and
Jose Bernardo Gochoco III**
ICLEI Southeast Asia Secretariat

**Examples of LGU Initiatives Aligned with
Green Recovery Principles**

Mary Jane Alvarez
ICLEI Southeast Asia Secretariat

Closing Message

Moderator
Chris Noel Hidalgo
ICLEI Southeast Asia Secretariat



The Conference Program IN DETAIL

DAY 2, November 10 (Thursday)

SIMULTANEOUS SESSIONS B

10:30 am – 12:00 noon

SESSION B3

**Interrogating Informality:
A Multidisciplinary Approach in
Studying and Understanding the
Informal Economy – Part I**

Interrogating Informality: Vendors,
Slums, and the Urban Economy

Chester Antonino C. Arcilla

University of the Philippines Manila

Interrogating Informality: Social
Anthropological Perspectives on
Women's Agency in Informal Economies

Mary Racelis

*Institute of Philippine Culture,
Ateneo de Manila University*

Rhea Maningo

Nagoya University

Interrogating Informality: Some
Theological Contributions on
the Informal Economy

Ma. Marilou S. Ibita

De La Salle University

Ma. Maricel S. Ibita

Ateneo de Manila University

Discussant

Philip Arnold P. Tuaño

Ateneo School of Government

Moderator

Enrique Niño R. Leviste

*Institute of Philippine Culture,
Ateneo de Manila University*

SESSION B4

**Digital Economies and Competition
and Innovation Frameworks**

Transformers Against SMS Spam

Mitch Abdon & Tanya Flint

University of California Berkeley

DigitALL for Her: Futurecasting Platform
Work for Women in Rural Philippines

Paul John M. Peña & Vince Eisen C. Yao*

Philippine Institute for Development Studies

Market Power in Philippine Agricultural
Industries using the Production
Function Approach

Gabriel B. Domingo

& Hadassah May R. Cordero

*Philippine Competition Commission/
University of the Philippines*

Moderator

Benjamin E. Radoc Jr.

Philippine Competition Commission



The Conference Program IN DETAIL

DAY 2, November 10 (Thursday)

SIMULTANEOUS SESSIONS C

1:00 pm – 2:30 pm

SESSION C1 **Issues in Macroeconomic** **Modeling and Policy**

Is the Philippines' Growth Rate Balance-
of-Payments Constrained?

Jesus Felipe* & Manuel Albis
De La Salle University

Comparing "Exclusion" to "Neutralization"
in Computing Core Inflation and Testing
Cointegration of Core with Headline
Inflation: Results for the Philippines

Jesus Dumagan* & Justine Eloriaga
De La Salle University

Some Lessons from an Estimated
Open-economy DSGE Model

Lawrence B. Dacuycuy*
De La Salle University
(Former PES President)

Mariel Monica R. Sauler
De La Salle University

Moderator
Mariel Monica R. Sauler
De La Salle University

SESSION C2 **Pro-Poor Development Policies:** **ATM Pawning, Inequality,** **Redistribution**

Collateralizing Wages:
The Case of Sangla ATM

Nobuhiko Fuwa
University of Tokyo

Kei Kajisa
Aoyama Gakuin University

Eduardo Lucio
ASB Bank Ltd. in Auckland

Sharon Faye Piza
World Bank

Yasuyuki Sawada*
University of Tokyo

Convergence of Philippine Spatial
Inequality during the American
Colonial Period

Jan Carlo B. Punongbayan*
UP School of Economics

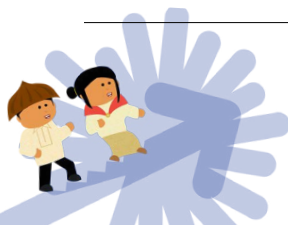
Jeffrey G. Williamson
Harvard University

Karl Robert L. Jandoc
UP School of Economics

Redistributive Preferences and
Prospects for Intergenerational Mobility
in Southeast Asia

Joseph J. Capuno
UP School of Economics
(Former PES Trustee)

Moderator
Karl Robert L. Jandoc
UP School of Economics



The Conference Program IN DETAIL

DAY 2, November 10 (Thursday)

SIMULTANEOUS SESSIONS C

1:00 pm – 2:30 pm

SESSION C3 **Prioritizing Sustainable Transport** **Helps Manage Inflation and Promotes** **Equitable Economic Recovery**

Fighting Transport Inflation:
A Ten-point Agenda
Kenneth Isaiah Abante*
Dinna Dayao, Robert Siy Jr*
Move As One Coalition

Bikenomics: Assessing the Value of
Cycling in the Philippines
Zaxx Abraham, Sarah Arrojado,
Cola Cobarrubias, Ira Cruz, Patrick Jalasco
Chinee Leobreria, Keisha Mayuga, Regina Mora
AltMobility PH

Towards a People-centric Mobility
Performance Evaluation and
Monitoring System in the Philippines
Katreena Chang*
Move As One Coalition
Daniel Benito*
WeSolve Foundation
Kenneth Isaiah Abante,*
Reycel Hyacenth Bendana
Move As One Coalition

Moderator
Reycel Hyacenth Bendana
Move As One Coalition

SESSION C4 **Economics of Energy,** **Economics of Disaster**

An Empirical Analysis of the Variance of
Retail Pump Prices in Metro Manila,
Baguio, Cebu, and Davao
Maria Demitherese Eugenio
University of Asia and the Pacific

Peter Lee U
University of Asia and the Pacific
(Former PES President)

Assessing the Vulnerability Factors
Affecting the Economic Losses from
Natural Disaster Using a Spatial
Autoregressive Model in the Philippines
Nathanael David Abines* & Ronald D. Estrada
Department of Science and Technology-Region XI

An Analysis on the Economic Resilience
and Vulnerability of Local Economies
in the Philippines
Gerwyn P. Enerlan
*University of the Philippines Visayas -
Tacloban College*

Moderator
Agham C. Cuevas
University of the Philippines Los Baños
(PES Trustee)



The Conference Program IN DETAIL

DAY 2, November 10 (Thursday)

SIMULTANEOUS SESSIONS C

1:00 pm – 2:30 pm

SESSION C5

Public Policy and Public Health Crisis

Taxation, Informality, and Public Debt

Ojasvita Bahl

Indian Statistical Institute-Delhi

Chetan Ghate*

*Institute of Economic Growth/
Indian Statistical Institute-Delhi*

Infrastructure Governance of the
Philippines: Challenges and Prospects

Susumu Ito

*Graduate School of International Studies
and Regional Development, University of
Niigata Prefecture*

Causality among Government
Expenditure, Tax Revenue, Economic
Growth and Inflation in the Philippines:
A Vector Autoregressive Approach

Rutcher M. Lacaza

UP School of Statistics

Moderator

Jovi C. Dacanay

*School of Economics,
University of Asia and the Pacific
(PES Trustee)*



The Conference Program IN DETAIL

DAY 2, November 10 (Thursday)

SIMULTANEOUS SESSIONS D

2:30 pm – 4:00 pm

SESSION D1

Textbook Launch: Macroeconomics for Emerging East Asia

Presenter

Calla Wiemer

American Committee on Asian Economic Studies

Discussants

Ruben Carlo O. Asuncion

Union Bank of the Philippines

(PES Secretary)

Ana Eslava-Jimenez

Philippine Competition Commission

Levi Guillermo Geganzo

UP Center for Integrative and Development Studies

Dan Alexander Jimenez

National Irrigation Administration

Jan Carlo B. Punongbayan

UP School of Economics

Moderator

Sarah Lynne S. Daway-Ducanes

*National Economic and Development Authority
(PES Trustee)*

SESSION D2

Pro-Poor Development Policies: Competition Law and Policy

Adopting and Adapting Competition Policy: Asian Illustrations

Majah-Leah V. Ravago, *Ateneo de Manila University*

James Roumasset, *University of Hawai'i*

Arsenio M. Balisacan, *National Economic and Development Authority*

Competition and Employment Growth in the Philippines: A Baseline Assessment

Stella A. Quimbo, *House of Representatives*

(Former PES President)

Meg L. Regañon, *Nathan Associates*

Eina Izabela Z. Concepcion, *Procter & Gamble*

Cara T. Latinazo, *Columbia University*

Regulation, Market Evolution and Competition in the Philippine Microfinance Sector

Jan Carlo B. Punongbayan, *UP School of Economics*

Gilberto M. Llanto, *Regulatory Reform Support*

Program for National Development Project

(Former PES President)

Emmanuel F. Esguerra, *UP School of Economics*

(PES Trustee)

Competition with Forward Market for Electricity: A Laboratory Experiment in Aid of Improving Market Design in the Philippines

Karl Robert L. Jandoc, *UP School of Economics*

Benjamin Radoc, *ADMU Department of Economics*

Majah-Leah V. Ravago, *ADMU Department of Economics*

Paolo Lorenzo Tejano, *Access Partnership Singapore*

Moderator

Benjamin E. Radoc Jr.

Philippine Competition Commission



The Conference Program IN DETAIL

DAY 2, November 10 (Thursday)

SIMULTANEOUS SESSIONS D

2:30 pm – 4:00 pm

SESSION D3

Interrogating Informality: A Multidisciplinary Approach in Studying and Understanding the Informal Economy – Part II

Interrogating Informality: The Local
Construction Industry Labor
Market Segmentation

Joselito T. Sescon

*Institute of Philippine Culture,
Ateneo de Manila University*

Interrogating Informality: Union Survival
Amid Contractualization
(The Experience of PH Unions in the
Automotive Industry)

Carmel V. Abao

*Department of Political Science,
Ateneo de Manila University*

The “In-” in “Informality” as the Injustice
of the City’s Ambivalence Towards
the Informal Sector

Remmon E. Barbaza

*Department of Philosophy,
Ateneo de Manila University*

Discussant

Philip Arnold P. Tuaño

Ateneo School of Government

Moderator

Enrique Niño P. Leviste

*Institute of Philippine Culture
Ateneo de Manila University*

SESSION D4

Econometric Models and Applications

A Leaky Pipeline: Decomposing the
Gender Gap in Job Search in
Urban Pakistan

Elisabetta Gentile

Asian Development Bank

Nikita A. Kohli*

Duke University

Nivedhitha Subramanian

Bates College

Kate Vyborny

Duke University

Public Debt and Economic Development:
An Empirical Evidence from Nigeria

Clifford Obiyo Ofurum*

University of Port Harcourt

Siminalayi Joseph Fubara

Ministry of Finance, Rivers State Secretariate

An Application of Large Bayesian
Vector Autoregressive (BVAR) Model in
Nowcasting the Philippine Economy

Marcus Jude P. San Pedro* Dennis M. Bautista,

Jan Christopher G. Ocampo, &

Mark Rex S. Romaraog

Bangko Sentral ng Pilipinas

Moderator

Faith Christian Q. Cacio

*Bangko Sentral ng Pilipinas
(Former PES President)*



The Conference Program IN DETAIL

DAY 2, November 10 (Thursday)

SIMULTANEOUS SESSIONS D

2:30 pm – 4:00 pm

SESSION D5
Education, Health, and
Human Capital Formation

Returns to Technical & Vocational
 Education & Training in the Philippines

Michael R. Cabalfin
Asian Development Bank

The Spatial Spillovers of Migration
 on Education

Christopher James R. Cabuay*
School of Economics, De La Salle University

Budy P. Resosudarmo
*Crawford School of Public Policy,
 Australian National University*

Does Pass/Fail Grading Affect Learning?
 Evidence from a Natural Experiment

Scott L. Chua*
Yale-NUS College
Guillem Riambau
Universitat de Barcelona

Timothy Wertz
Yale-NUS College

The Equity-Impact of Free Tertiary
 Education Program in the Philippines

Charlotte Marjorie L. Relos
Ateneo de Manila University

Moderator
Marites M. Tiongco
School of Economics, De La Salle University
 (PES Trustee)



The Conference Program IN DETAIL

DAY 3, November 11 (Friday)

SIMULTANEOUS SESSIONS E

8:30 am – 10:00 am

SESSION E1

Missed Opportunities and Unmet Needs for Financial Coverage and Care Among Elderly Filipinos

Missed Opportunities for Hypertension Screening among the Elderly: A Cross-sectional Study, Philippines

Joseph J. Capuno,
*School of Economics,
University of the Philippines*

Aleli D. Kraft,*
*School of Economics,
University of the Philippines
(Former PES Trustee)*

Owen O'Donnell
*School of Economics,
University of the Philippines*

Awareness and Use of the Philhealth Coverage among Elderly Filipinos
**Benedict Jr. Evangelista,* Kristine Anne Gloria,
Kayleen Gene Calicdan**
*School of Economics,
University of the Philippines*

Unmet Needs for Hypertension Care among the Elderly Population
**Grace T. Cruz,* Mark Ryan Paguirigan,
Maria Karlene Shawn Cabaraban**
University of the Philippines Population Institute

Moderator
Joseph J. Capuno
National Economic and Development Authority

SESSION E2

Pro-Poor Development Policies: Demographic Dividend, Agricultural Competition, Political Economy

Reaching for the Demographic Dividend to Achieve Inclusive Economic Growth

Dennis Mapa
Philippine Statistics Authority

Ernesto Pernia*
*School of Economics,
University of the Philippines
(Former PES President)*

Lisa Grace Bersales*
*School of Statistics,
University of the Philippines*

The Role of Government Subsidies on Philippine Agricultural Competition

Arlene B. Inocencio*
School of Economics, De la Salle University
Agnes C. Rola
NAST and University of the Philippines, Los Baños

The Political Economy of Rice Policy in the Philippines

V. Bruce J. Tolentino*
*Bangko Sentral ng Pilipinas
(Former PES Trustee)*

Beulah Maria de la Pena
Bangko Sentral ng Pilipinas

Moderator
Sarah Lynne S. Daway-Ducanes
National Economic and Development Authority



The Conference Program IN DETAIL

DAY 3, November 11 (Friday)

SIMULTANEOUS SESSIONS E

8:30 am – 10:00 am

SESSION E3 Poverty Alleviation and Labor Economics

Gender Roles and Safety of Women at Home in the COVID-19 Era: Evidence from 101 Countries

Michael Batu* & Bosu Seo
University of the Fraser Valley

Cash Transfers and Temptation Goods: An Analysis on the Impact of Cash Transfers on Poor Households'

Consumption of Sugar-sweetened Beverages in the Philippines
Janelle S. Tiu* & Vince Eisen C. Yao
De La Salle University

Empirical Analysis of Gendered Effects of Wage-Differentials and of Employment on Inflation Rate

Carlos Santiago B. Tabora & Noel P. de Guzman
Ateneo de Manila University

Moderator
Philip Arnold P. Tuaño
Ateneo de Manila University

SESSION E4 Financial Economics and Trade

Bank Competition, Concentration and Financial Stability: Insights into the Emerging Markets of the Universal and Commercial Banking System of the Philippines

Jovi C. Dacanay,* Michaela Merino, & Ella Leonida
University of Asia and the Pacific

Banking on the Future: Measures, Drivers, and Benefits of a Cashless Economy Amidst COVID-19

Ethan Gabriel N. Lee,* Josh Cody H. Ong,* Catherine Beatriz A. Salazar,* & Scott Gabriel D. Tiamson
University of Asia and the Pacific

An Assessment of the New Goods Margin in Philippine Exports to the EU

Irwin A. Cruz
Ateneo de Manila University

Moderator
Peter Lee U
*School of Economics,
University of Asia and the Pacific*



The Conference Program IN DETAIL

DAY 3, November 11 (Friday)

SIMULTANEOUS SESSIONS F

10:00 am – 11:30 am

SESSION F1

Credit Allocation, Financial Literacy, and Market Outlook

(Sponsored by: First Metro and ACERD)

Mandatory Credit Allocation and Government Guarantee

Luis F. Dumlao

*Department of Economics,
Ateneo de Manila University
(Former PES Trustee)*

An In Depth Analysis of Teachers' Financial Literacy: Path Towards Improved Financial Education for Filipinos

Maire Carroline Magante*

*Department of Economics,
Ateneo de Manila University*

Majah Leah Ravago

*Department of Economics,
Ateneo de Manila University*

Faith Christian Q. Cacio

Bangko Sentral ng Pilipinas

Cymon Kayle Lubangco

Ateneo de Manila University

Marie Edelweiss Romarate

Bangko Sentral ng Pilipinas

Market Focus: 2023 Outlook for

Philippine Equities

Reuben Mark Angeles* &

Estella Dhel Villamiel*

First Metro Securities Research

Moderator

Genesis Kelly Lontoc

*Department of Economics,
Ateneo de Manila University*

SESSION F2

Economic and Political Governance Beyond the Crisis

(Sponsored by: Stratbase ADRI)

Philippines: Pursuing an Investment-led, More Sustainable Economic Growth

Diwa C. Guinigundo

(Former PES Trustee)

Issues for the Next Administration's Development Agenda on Human Capital and Labor Markets

Vicente B. Paqueo* & Michael R. M. Abrigo

Stratbase ADR Institute

Building Back Better Towards Inclusive Growth with Innovative Public Sector Governance

Charlotte Justine Diokno-Sicat

Philippine Economic Society

Moderator

Victor Andres Manhit

Stratbase ADR Institute



The Conference Program IN DETAIL

DAY 3, November 11 (Friday)

SIMULTANEOUS SESSIONS F

10:00 am – 11:30 am

SESSION F3

What Will Make Us Leap Forward?: The BSP Narrative

(Sponsored by: Bangko Sentral ng Pilipinas)

Investigating the Presence of Fiscal
Dominance and its Implications to
Monetary Policy in the Philippines

Laura B. Fermo

Bangko Sentral ng Pilipinas

Does Bank Competition and Efficiency
Steer Bank Stability?

Veronica B. Bayangos

Bangko Sentral ng Pilipinas

The Philippines under a New Economy:
The Role of Broader Payments
Digitalization in Fostering
Inclusive Growth

**Mary Rose A. Contreras,* Bridget Rose M.
Mesina-Romero,* Jan Marlon A. Evangelista,
Aldwin N. Nacional, Krisabelle Ivanna S. Gatpo,
Maria Christina S. Masangkay, Maria Dorecyl M.
Evidente, Marco Luis R. De Larrazabal, John Jerry
B. Jaspio, and Paulene Nina O. Bueno**

Bangko Sentral ng Pilipinas

Moderator

Faith Christian Q. Cacnio

Bangko Sentral ng Pilipinas

SESSION F4

Agriculture, Natural Resource and Environmental Management

Viability of Adopting Climate Resilient
Practices in Small Scale Vegetable
Production in Leyte, Philippines

Canesio Predo

University of the Philippines Los Baños

Moises Neil V. Serioño*

Visayas State University

Maria Teresa de Guzman

DOST-PCAARRD

Jaclyn Grey

Australian Centre for International

Agricultural Research

Assessment on the Economic
Contribution of Mining Industry in
Carrascal

Irish Joy A. Yparraquirre

North Eastern Mindanao State University

Moderator

Marites M. Tiongco

School of Economics, De La Salle University



The Conference Program IN DETAIL

DAY 3, November 11 (Friday)

GENERAL MEMBERSHIP ASSEMBLY

1:00 pm – 1:30 pm

President's Report	Dr. Charlotte Justine Diokno-Sicat, <i>PES President</i>
Membership Report	Mr. Ruben Carlo O. Asuncion, <i>PES Secretary</i>
Treasurer's Report	Dr. Kevin C. Chua, <i>PES Treasurer</i>

PLENARY SESSION VI

Addressing the Social Insurance Needs of the Population

1:30 pm – 2:45 pm

Panelists	Rep. Stella Luz A. Quimbo <i>House of Representatives</i>
	Atty. Eli Dino Santos <i>Philippine Health Insurance Corporation</i>
	Mr. Sem H. Cordial <i>Philippine Crop Insurance Corporation</i>
	Mr. Jun Jay Perez <i>Rimansi Organization for Asia and the Pacific</i>
Moderator	Dr. Fernando T. Aldaba <i>Department of Economics, Ateneo de Manila University</i>

CLOSING PLENARY SESSION

3:00 pm – 4:30 pm

Panel Discussion: Forecasting the Philippine Economy: Challenges and Opportunities

Panelists	Dr. Ndiame Diop <i>World Bank</i>
	Dr. Kelly Bird <i>Asian Development Bank</i>
	Dr. Cielito F. Habito <i>Department of Economics, Ateneo de Manila University</i> (Former PES President)
	Dr. Johanna Chua <i>Citigroup</i>
Moderator	Mr. Emilio S. Neri, Jr. <i>Bank of the Philippine Islands</i> (Former PES President)

Oath-taking of the Young
Economists Honor Society 2022

Oath-taking of New PES Members

Announcement of Election Results

Closing Remarks Dr. Philip Arnold P. Tuaño, *PES Vice President*



Conference Partners and Sponsors

MAJOR PARTNER

- National Economic and Development Authority

PLATINUM PARTNERS

- Friedrich Naumann Foundation for Freedom
- Philippine Competition Commission
- United Nations Development Programme
- De La Salle University
- Southeast Asian Regional Center for Graduate Study and Research in Agriculture

GOLD SPONSORS

- Bank of the Philippine Islands

SILVER SPONSORS

- Ateneo de Manila University Department of Economics
- Ateneo Center for Economic Research and Development
- First Metro Securities
- Aboitiz Power Corporation
- Bangko Sentral ng Pilipinas
- DOST-Philippine Council for Agriculture, Aquatic and Natural Resources Research and Development
- Stratbase ADR Institute
- Union Bank of the Philippines
- Institute of Southeast Asian Studies-Yusof Ishak Institute

OTHER CONTRIBUTOR

- Philippine Social Science Council





ECONOMIC & FINANCIAL LITERACY WEEK 2022

ISAPLANO:

Bagong Philippine Development Plan
para sa Patuloy na Pagsulong

November 2022



For more information and updates on the economy, follow us on Facebook, Twitter, and Youtube:



@NEDAhq

Visit the NEDA website: <https://neda.gov.ph>

FRIEDRICH NAUMANN FOUNDATION For Freedom.

Philippines



It's All About Freedom



www.freiheit.org



(63)(2) 88196086/7



FNF.Philippines@freiheit.org

iCLP: Online Learning Hub on Competition Law and Policy



<https://iclp.phcc.gov.ph/>



Featured Courses:

- Leveling the Playing Field through the National Competition Policy (NCP): A Blended Learning Course for Government Agencies
- Making Markets Work for Consumers
- Introductory Course on CLP for MSMEs

**Leading innovation in economics
education, research, and public service
since 1961**



www.dlsu.edu.ph



Imagine what you can **ATTAIN** with **SEARCA**...

Qualify for Master's and PhD Scholarships in agriculture, forestry, and related sciences at premier universities in Asia and around the world.

Participate in Training Programs and Events for multi-modal learning opportunities and professional development.

Avail of Institutional Development Assistance for agricultural universities that are strategically important to their country's socioeconomic development.

Partner in Research Programs and Projects that lead to transformational change in agriculture and support policy at the national and regional levels.

Qualify for Grants that support research and dissemination of research findings in agricultural and rural development.

Partner in Technology Incubation and Transfer to create innovative and sustainable products that will boost agricultural productivity and income.

Tap Expertise in Project Development, Monitoring, and Evaluation to implement technical and development projects.

Partner in Publications with special focus on agricultural and rural development in Southeast Asia. Among our publications trusted by policymakers, researchers, and academics is the Asian Journal of Agriculture and Development (AJAD).

Enjoy Hotel and Conference Facilities for up to 400-person events and 50 hotel guests, located just 60 km outside Metro Manila and within the University of the Philippines Los Baños (UPLB) campus.

Learn more about SEARCA's offerings:

<https://www.searca.org/what-we-do#attain>



SEAMEO
SEARCA





PHILIPPINE ECONOMIC SOCIETY